

Contacts

Some CTU unions have their own structures to support LGBTI workers.

- PPTA - Rainbow Taskforce for Safe Schools: www.ppta.org.nz
- PSA - www.psa.org.nz/psa_networks.asp
- NZEI Rainbow Network - www.nzei.org.nz/members_groups/rainbow_network.htm
- SWFU - www.sfwu.org.nz

The CTU Out@Work network is a CTU cross-union network

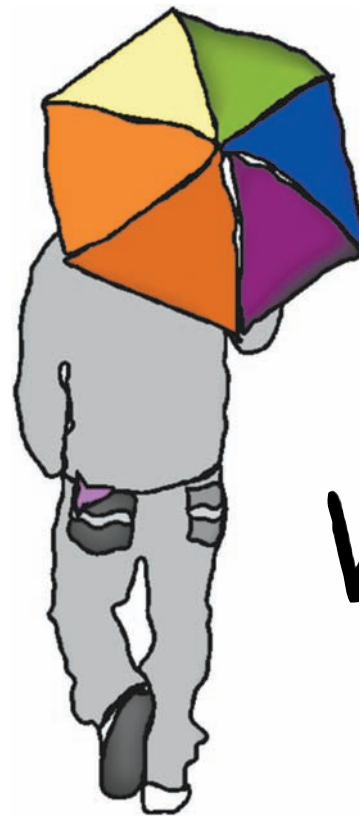
- <http://union.org.nz/outatwork/>

Connection with CTU

The CTU represents over 350,000 workers in 40 affiliated unions.

The CTU promotes human rights internationally. The National Affiliates Council has supported international resolutions and declarations on the rights of LGBTI workers.

The CTU also maintain links with the International Trade Union Confederation (ITUC) and other global unions and engages with organisations committed to respecting and promoting the rights of LGBTI workers.



Out
at
Work

CTU

NEW ZEALAND COUNCIL OF TRADE UNIONS
Te Kauae Kaimahi

Out@Work

Lesbian, Gay, Bisexual, Transgender, Intersex, Takataapui, Fa'afafine, and Queer workers (LGBTI) often experience workplace discrimination. Trade unions have an important role to play in protecting and defending their rights.



Participants at CTU Out@Work Kamp 2007

The CTU Out@Work Council works to develop policies and programmes to support and advance the rights of LGBTI workers.

LGBTI Lesbian, Gay, Bisexual, Transgender,
Intersex, Takataapui, Fa'afafine, and
Queer workers



Out@Work works with unions to raise awareness of the issues LGBTI workers face, and to end workplace discrimination based on sexual orientation and gender identity.

Out@Work is the representative group for LGBTI workers within the CTU, and is open to all CTU affiliated unions and their members.

Support and celebrate diversity at work.
Support [Out@Work](#).

GET IN TOUCH - talk to your union delegate or union organiser for more information. And if you're not a member - join the union!

Go to the CTU's Out@Work web page:
www.union.org.nz/outatwork

Out
and
Proud,
and
part
of the
Union
Crowd